

Implementing a Digital Asset Management System at the Met

Billy C.H. Kwan
Associate Museum Librarian/Systems
Image Library
The Metropolitan Museum of Art, New York, NY

© 2007 The Metropolitan Museum of Art



Anyone not familiar with the Met?

- Background Information:
 - The Museum:
 - 17 curatorial departments
 - > 12 libraries and study centers
 - > 2 million works of art from around the world and from all eras

[Background]

- Challenges:
 - Sheer volume of our objects and images
 - Diversity of our collections from various cultures and periods
 - The complexity of our institutional structure
 - E.g., > 21 TMS databases for 17 curatorial departments; a “Have-nots” TMS database for objects not found in corresponding curatorial TMS databases

[Background]

- The Image Library:
 - Formerly known as Photograph and Slide Library
 - Providing image services to the Museum and the public for almost 100 years.
 - The collections:
 - >850,000 35mm slides
 - >35,000 large-format color transparencies in the master files
 - >270,000 negatives for reproducing black-and-white photographs for study/publication purposes
 - >200,000 digital images produced by the Museum’s Photo Studio in the last decade

[Background]

- Roles of the Image Library:
 - Similar to other visual resources/image centers: providing images/visual resources in various formats for research and scholarly purposes
 - Serving as an archive for the photographic records of our objects
 - Licensing activities: e.g., publications, films, lectures, broadcast, various electronic and commercial uses.
 - Providing high-quality images for licensing purposes (e.g., large-format color transparencies and high-resolution image files)

[Example of Our High-Resolution Image]



[Major Constituents of the Met Images Project]

- Director's Office
- Information Systems and Technology
- Image Library
- Photo Studio
- Curatorial Departments

[Other Users of the Met Images]

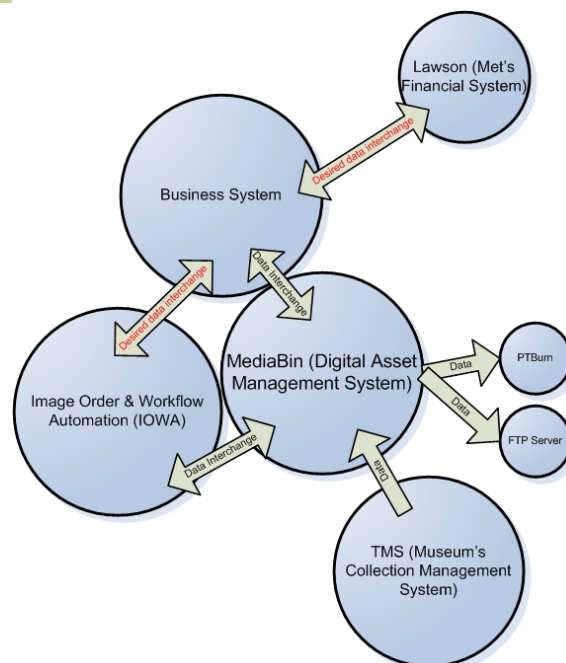
- In addition to the Image Library, Photo Studio and the curatorial departments:
 - Editorial
 - Education
 - Libraries and Study Centers
 - Website
 - Public

Other Uses/Functions of the Met Images Project

- Apart from building a central repository for our digital images/assets:
 - Support the Image Library's licensing activities
 - Control the Museum's image request and production workflow (i.e., integration with Photo Studio's activities)
 - Generate derivatives from the master image files for internal and external uses

Image Library Systems Diagram

As of February, 2007



[Data Sources for Migration]

- TMS
 - Provide object metadata to our image records (>330,000 TMS records have been loaded into MediaBin as placeholders for linking/matching; object metadata are also linked and copied to the ingested image records)
- PSDB
 - Provide records for our current black & white negatives (>270,000 records were loaded as placeholders)
- PSLWeb
 - Web-based database containing >21,000 records of our color transparency circulating files, also loaded as placeholder records in MediaBin

[Data Sources for Migration]

- Studio Workhorse
 - Photo Studio's current digital photography workflow system (estimated 7500 digital images)
- Digital images
 - Approximate 200,000 back files of Photo Studio's direct digital photography on hundreds of CDs/DVDs
 - Scanning of >25,000 large-format transparencies from the Image Library's collection

[MediaBin]

- A Digital Asset Management (DAM) system designed and provided by Interwoven.
- Interwoven specializes in Enterprise Content Management solutions for business; MediaBin is the DAM module of Interwoven's content management system suite.
- Its customers are mainly financial and commercial corporations, e.g., Deutsche Bank, Coca-Cola, General Motors, Reebok and some advertising and media companies.
- They use MediaBin "to manage the thousands of digital assets and marketing content used to promote their products and brands."

[MediaBin]

- Their original metadata structure and nomenclature are quite different from the standards of the art/visual resources community.
- Flat-file structure of the database, different from the relational structure of work, image & collection records recommended by VRA Core 4.0 and CCO.

Customization of MediaBin's Metadata Structure

- During the initial implementation, attempts were made to map MediaBin's metadata structure to CDWA Lite.
- At that time, the XML standard of VRA Core 4.0 was not fully established.
- Subsequent reviews and revisions of MediaBin's metadata structure have made the system slightly closer to the VRA Core 4.0 and CCO standards.

Current MediaBin's Metadata Groups

- Object Metadata:
 - Object Repository, Department, Accession Number, Object Maker, Object Title, Object Name, Object Culture, Object Date, etc.
- Image Metadata:
 - Image View, Image Description, Image Public Caption, Photographer, etc.
- Rights and Restrictions Metadata:
 - Image Rights Allowable Use, Image Rights Condition, Image Rights Copyright Notice, Image Rights Legal Restrictions, etc.

MediaBin-Object Metadata

MediaBin™

click on the image to get a larger preview

INFORMATION

INFO LAYERS HISTORY ASSOCIATIONS REFERENCES TRACKING

Group: 1_Object Metadata

1_Object Metadata	
Department	Asian Art
Object_Object Number	S4.69.1
Object_Maker	Suzuko Kitsu, Japanese, 1796-1858
Object_Title	Morning Glories
Object_Alternate Title	Blue and green flowers
Object_Culture	Japan
Object_Period	Edo period (1615-1868)
Object_Date	early 19th century
Object_Date Begin	1800
Object_Date End	1835
Object_Medium	Six-panel screen; ink, color, and gold on gilded paper
Object_Dimensions	70 3/16 x 145 1/2 in. (178.2 x 379.6 cm) folded: H: 71 3/4 in., W: 25 7/8 in., D.: 4 1/2 in.
Object_Marks	See inscription in "Painting and Sculpture of The Metropolitan Museum of Art, New York".
Object_Signature	Signed left, three characters in black, one in red encircled in red
Object_Credit Line	Seymour Fund, 1954
Object_Object Status	Accessioned object
Object_ID	19618
Object_Composite Key	TMS:CLUSTER02\TMS:Q02.asian.19618
Object_Sort Number	1954 69 1
Object_TMS Object Package Name	NHK documentary; Rimpa Style Paintings; Rimpa; J Rot 7/05; J Rot 6-06

NAME
DT1587.tif

REVISION
10

FOLDER
Asian Art\Accessioned Objects\Images\0001

close prev next

Copyright © 1999-2007 Interneoven, Inc. All rights reserved.
MediaBin and STING are trademarks of Interneoven, Inc.

MediaBin Web Client, Release 4.5.3 Build 15 P66400.

MediaBin-Image Metadata

MediaBin™

click on the image to get a larger preview

INFORMATION

INFO LAYERS HISTORY ASSOCIATIONS REFERENCES TRACKING

Group: 2_Image Metadata

2_Image Metadata	
Name	DT1587.tif
Asset Type	TIFF
Asset Class	Image asset
CT Number	DT1587.tif
Dimensions (pixels)	6319 x 3419
Resolution (ppi)	600 x 600
Bit Depth	0
Colorspace	RGB
ICC Profile Identifier	Adobe RGB (1990)
Number of Channels	3
Original File Size	64,843,030 Bytes
Insertion Time	1/10/2007 10:23:13 PM
Check In User	MMA\kwanbi
Modified Time	3/2/2000 2:39:06 PM
Source_Dir_File_Name	Vfirst2000\4\DT1587.tif

NAME
DT1587.tif

REVISION
10

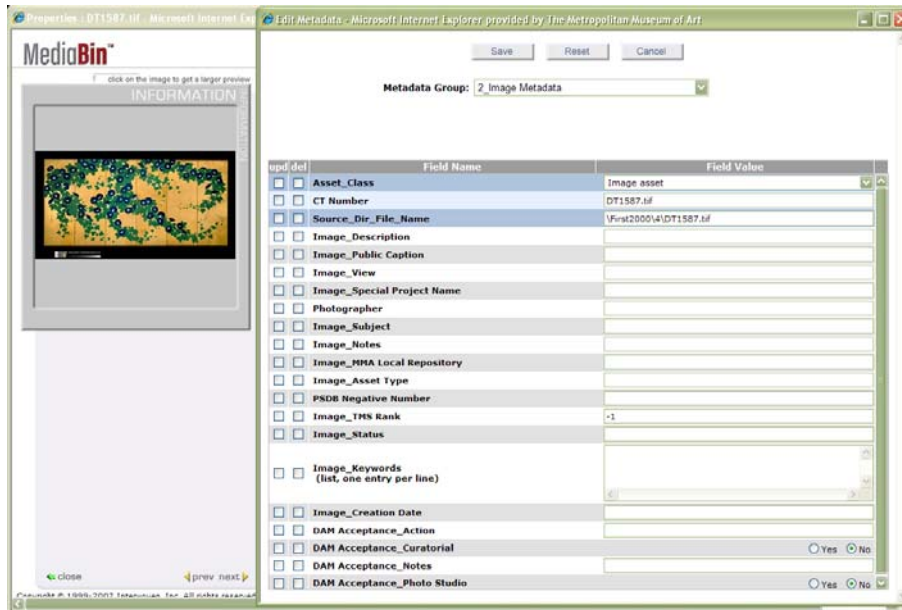
FOLDER
Asian Art\Accessioned Objects\Images\0001

close prev next

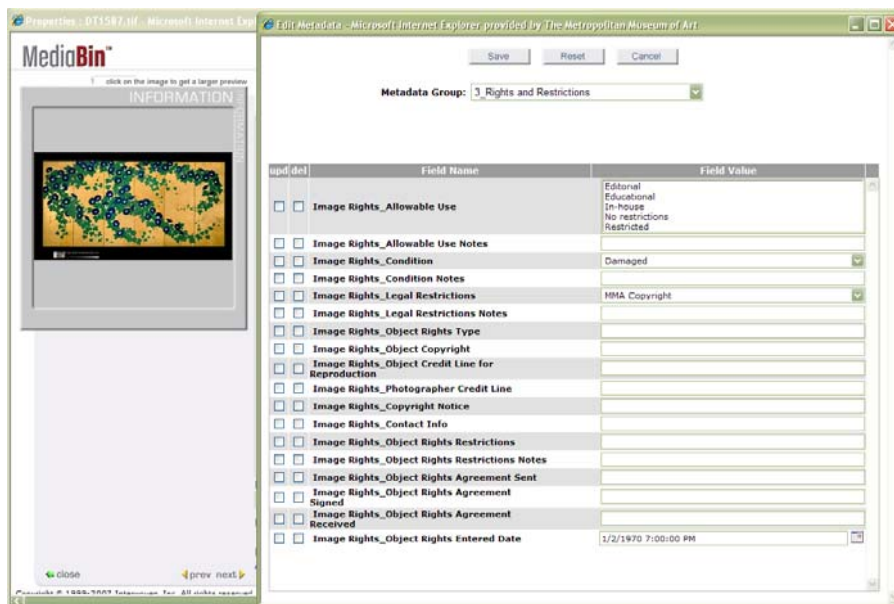
Copyright © 1999-2007 Interneoven, Inc. All rights reserved.
MediaBin and STING are trademarks of Interneoven, Inc.

MediaBin Web Client, Release 4.5.3 Build 15 P66400.

MediaBin-Image Metadata (cont.)



MediaBin-Rights & Restrictions Metadata



[Implementation Constraints]

- Large amount of object metadata from TMS:
 - Data quality and standards vary among each curatorial department; commitment/compliance to standards also varies.
- Initial implementation process, no reference to VRA Core 4.0 and CCO standards:
 - E.g., Object Maker is a concatenated text of a number of fields related to the object creator(s), such as creator name, role, dates, and attribution, etc.
 - Many fields can only be mapped to the display elements of the VRA Core 4.0 and CDWA Lite XML standards.

[Implementation Constraints (cont.)]

- Flat-file structure of the MediaBin database.
- Lack of an authority/thesaurus module in the system.

[Conclusion]

- Met's first digital asset management system.
- Provides the Museum with a technological platform to grow in the future:
 - Moving closer to the visual resources standards
 - Interoperability with other collection/information/content management systems within and without the Museum.