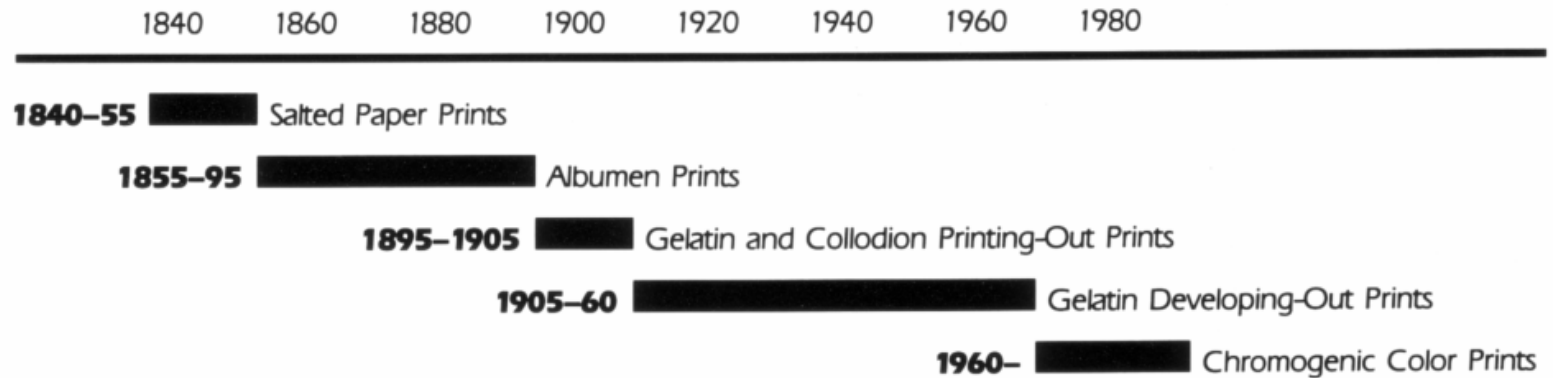


# Reframing Legacies: Turning Liabilities into Assets

The good, the bad, and the useful among  
educational visual assets

Christine L. Sundt  
Editor, Visual Resources  
[csundt@mindspring.com](mailto:csundt@mindspring.com)

## Timeline of Major Photographic Print Processes



J. Reilly, Care and Identification of  
19<sup>th</sup>-Century Photographic Prints, p. 1

Transparency between glass

Emulsion on glass



Hand-painted emulsion on glass

Oxidized emulsion on glass

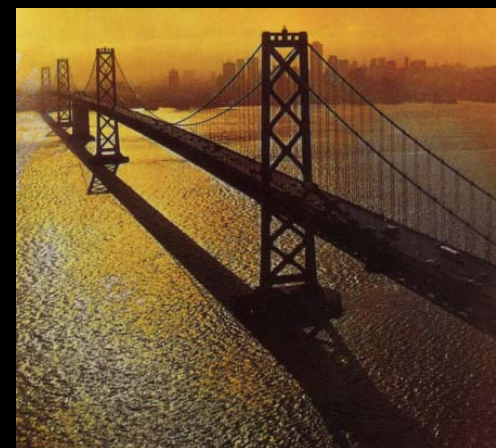
Visualizing damage  
and why it happens



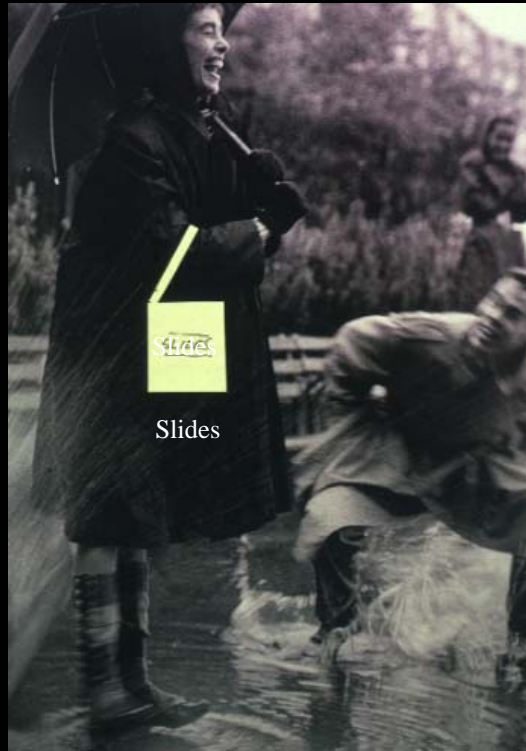
Same effects on silver  
and silverplate



Oxidation & Oxidative-reductive deterioration



# Causes



Slides

also...



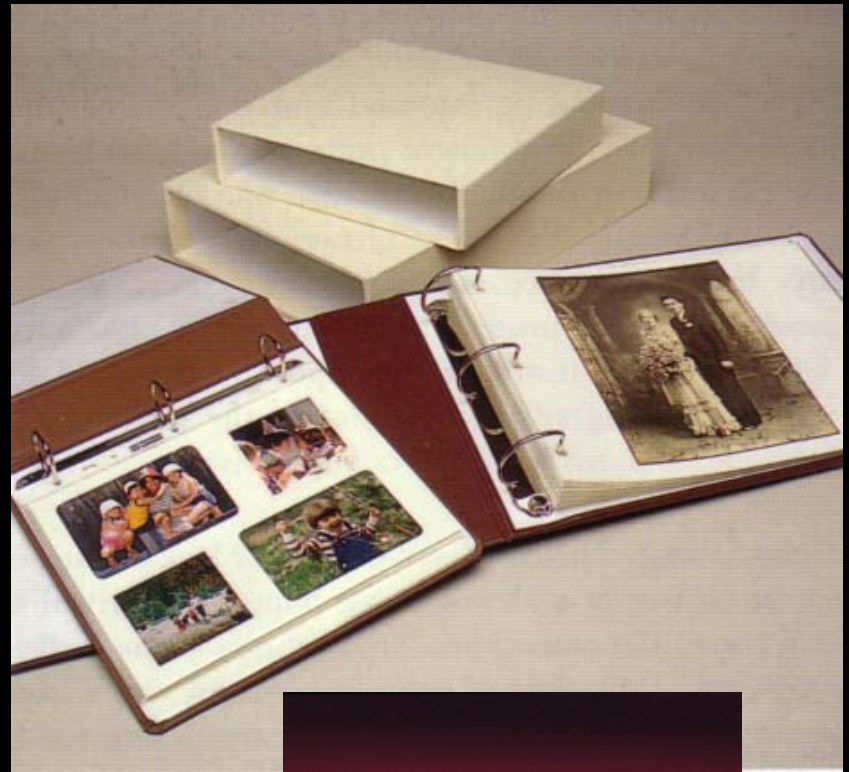
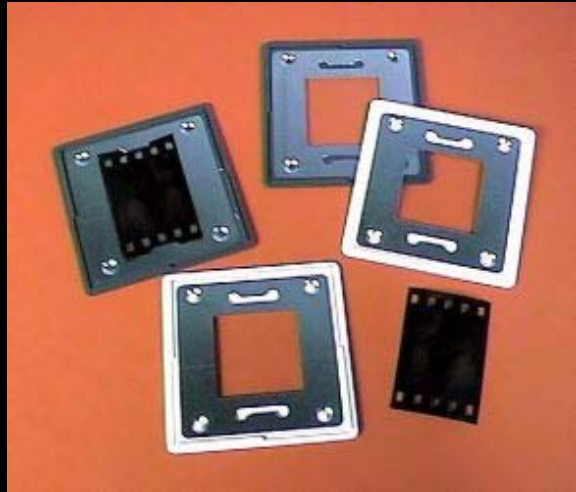
Some effects:

Mold or Fungus



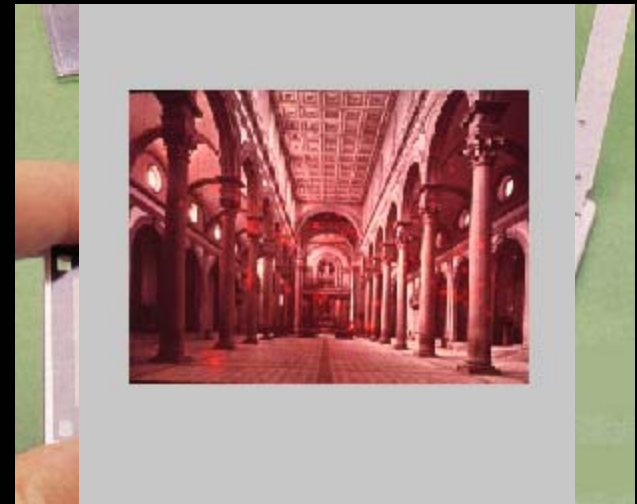
Rodent action

# Good Intentions



# Advantages of Slide Mounts

- Protection from fingerprints
- Slows down moisture accumulation
- Provided a durable container
- Promotes safer masking
- Keeps dust off the film





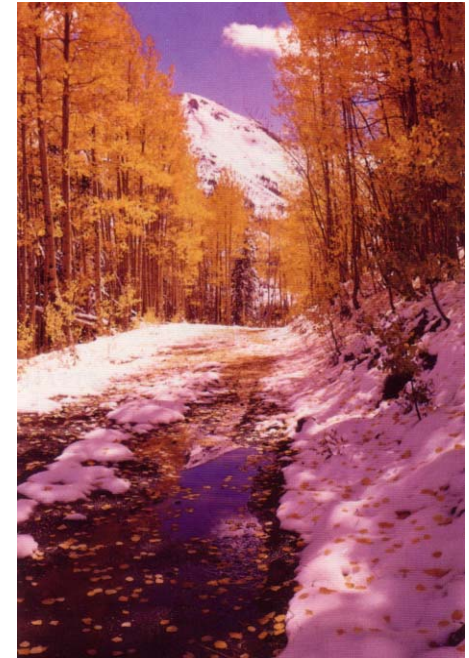
# Disadvantages

- Glass breaks
- Moisture accumulates during humid periods
- Masking restricts expansion & contraction
- Harmful gases are trapped
- Expensive
- Labor-intensive



Dark-storage fading  
(E-6 process)

Display fading  
(C-41 process)





# Black & White film & color rendition



-Notice the yellow tie...



Before Cleaning



After Cleaning



Before Cleaning



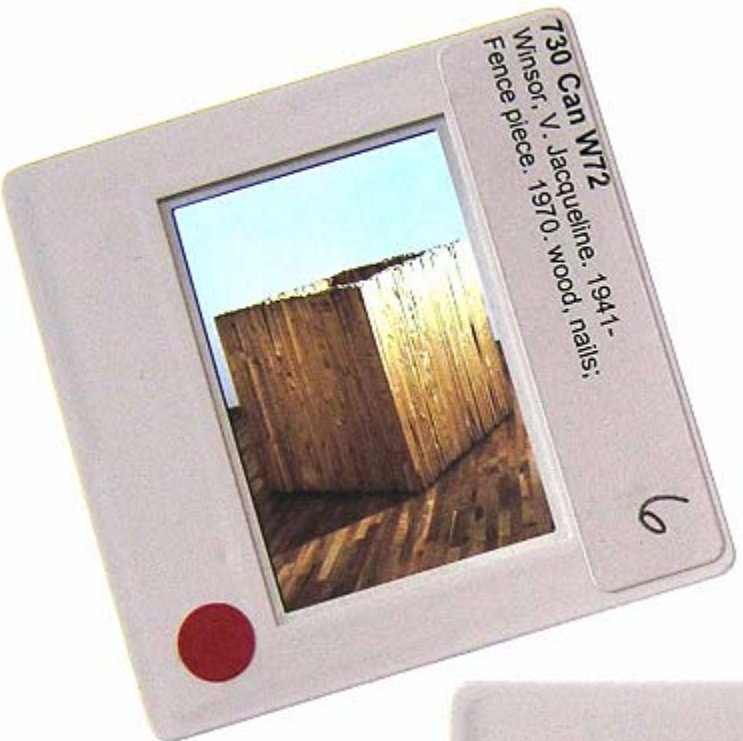
After Cleaning

Digital file indicator

Usage marks



Collection IDs



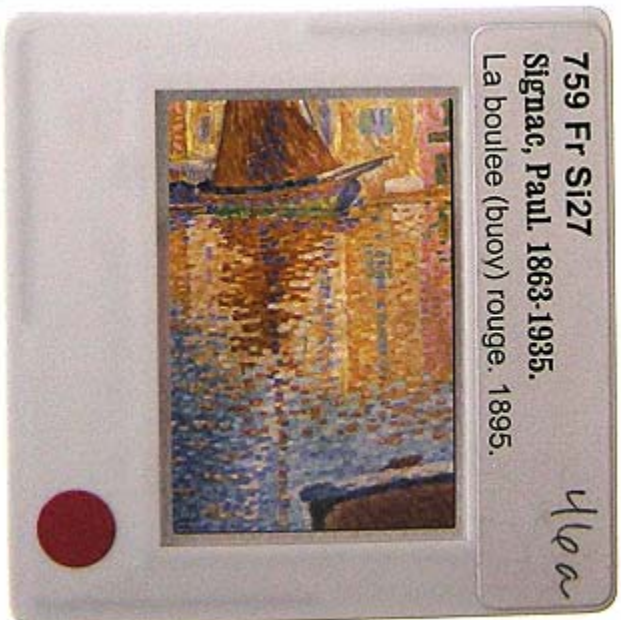
**730 Can M72**  
Minsor, V. Jacqueline: 1941-  
Fence piece: 1970. wood, nails:

6



**726 Amo Eu42h C131**  
Eugene (Lane).  
Campbell House [now Inn]. 1892. renovated mid-  
1990s. extenor.

3



**759 Fr Si27**  
Signac, Paul. 1863-1935.  
La boulee (buoy) rouge. 1895.

4/10a



SLIDE OF ORIGINAL OBJECT



U OF O BOOKSTORE 21

DUPLICATE OF SLIDE OF ORIGINAL OBJECT



SLIDE OF REPRODUCTION OF ORIGINAL OBJECT



OCTOBER 2001

*repro*

DUPLICATE OF SLIDE OF REPRODUCTION



U OF O BOOKSTORE 13



SLIDE OF ORIGINAL OBJECT



DUPLICATE OF SLIDE OF ORIGINAL OBJECT

U OF O BOOKSTORE 11



*repro*

SLIDE OF REPRODUCTION OF ORIGINAL OBJECT



DUPLICATE OF SLIDE OF REPRODUCTION

SLIDE OF ORIGINAL OBJECT



U OF O BOOKSTORE 22

DUPLICATE OF SLIDE OF ORIGINAL OBJECT



SLIDE OF REPRODUCTION OF ORIGINAL OBJECT



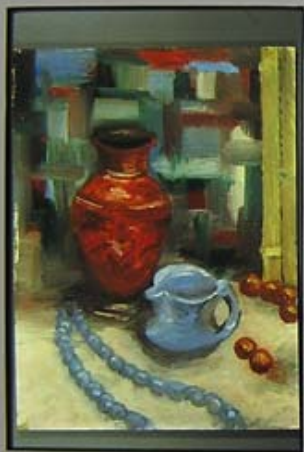
U OF O BOOKSTORE 09

*repro*

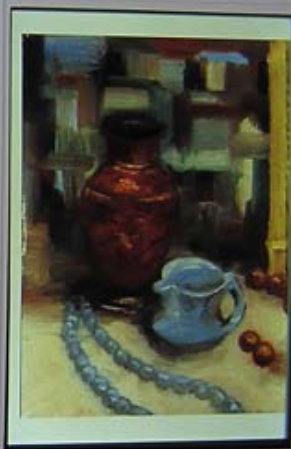
DUPLICATE OF SLIDE OF REPRODUCTION



U OF O BOOKSTORE 13



SLIDE OF ORIGINAL OBJECT



DUPLICATE OF SLIDE OF  
REPRODUCTION

SLIDE OF ORIGINAL OBJECT



U OF O BOOKSTORE 22

DUPLICATE OF SLIDE OF  
REPRODUCTION



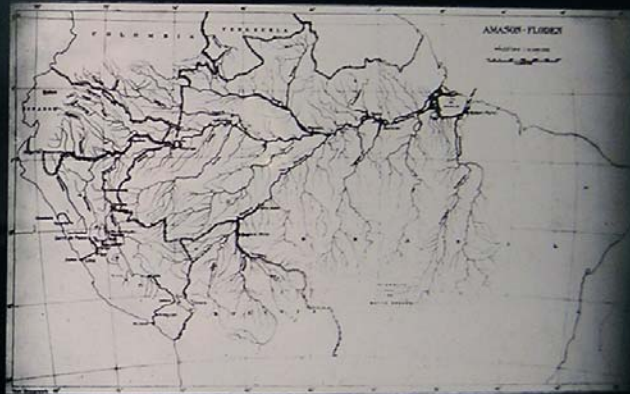
NEW BOX

17<sup>a</sup>

Et rikt bytt



2<sup>de</sup> - Kart Amazonfloden



1. *Worm Petersen*  
WORM-PETERSEN, FOTOGRAF, KRISTIANA.



2. *Worm Petersen*  
WORM-PETERSEN, FOTOGRAF, KRISTIANA.



3. *Worm Petersen*  
WORM-PETERSEN, FOTOGRAF, KRISTIANA.



4. *Worm Petersen*  
WORM-PETERSEN, FOTOGRAF, KRISTIANA.



5. *New York a side*  
WORM-PETERSEN, FOTOGRAF, KRISTIANA.



6. *Worm Petersen*  
WORM-PETERSEN, FOTOGRAF, KRISTIANA.



7. *Worm Petersen*  
WORM-PETERSEN, FOTOGRAF, KRISTIANA.



8. *Worm Petersen*  
WORM-PETERSEN, FOTOGRAF, KRISTIANA.



9. *Worm Petersen*  
WORM-PETERSEN, FOTOGRAF, KRISTIANA.



10. *Worm Petersen*  
WORM-PETERSEN, FOTOGRAF, KRISTIANA.



11. *Worm Petersen*  
WORM-PETERSEN, FOTOGRAF, KRISTIANA.



12. *Worm Petersen*  
WORM-PETERSEN, FOTOGRAF, KRISTIANA.



Horung-  
land



7. Klamas



10. Kart. Sydamerika



12. Fra Lima - Oroya banen



12. Fra Lima - Oroya banen



14. Reng Sanden

WILHELM PETERSEN, FOTOGRAF, KRISTIANIA



15. Reng Sanden

WILHELM PETERSEN, FOTOGRAF, KRISTIANIA



16. Reng Sanden

WILHELM PETERSEN, FOTOGRAF, KRISTIANIA



17. Reng Sanden

WILHELM PETERSEN, FOTOGRAF, KRISTIANIA



18. Reng Sanden

WILHELM PETERSEN, FOTOGRAF, KRISTIANIA



19. Reng Sanden 1/6 1913

WILHELM PETERSEN, FOTOGRAF, KRISTIANIA



25. Dances, Amazonas



2) DIRECTIONS FOR USING THE  
**IMPERIAL ("SPECIAL")  
LANTERN PLATES,**  
FOR PRODUCING TRANSPARENCIES OF A BLACK TONE.

The exposure required for a negative of ordinary density will be about 5 to 10 seconds at a distance of 24 inches from an ordinary gas burner.

Developing formula (Hydrokinone) is the same as that used with our Ordinary plates, viz. :

No. 1.		No. 2.	
Hydrokinone ... ..	150 grs.	Sulphite of Soda ... ..	2 ozs.
Metabisulphite of Potash	10 "	Caustic Soda ... ..	100 grs.
Bromide of Potassium...	50 "	Water (boiled or dist.) to	20 ozs.
Water (boiled or dist.) to	20 ozs.		

For use, take equal parts of No. 1 and No. 2.

After using this developer, always rinse the negative well before transferring to the fixing bath.

The chief characteristic of Hydrokinone is its density-giving power; it is *par excellence* the developer for Lantern plates.

**The IMPERIAL DRY PLATE Co., Ltd.,**  
CRICKLEWOOD, LONDON, N.W.

NEW BOX

# Adobe Bridge



PC310017  
12/31/2004, 4:51:47 AM



PC310018  
12/31/2004, 4:52:09 AM





HIGHEST CAMP ON ACONCAGUA

113314



"EL CUERNO" AND HORCONES GLACIER

Did you say “Copyright”?

